

Looking for a special gift for the holiday season? How about a gift of travel from a Crater Lake Country partner. We've selected some of the easiest ways to buy a gift direct from a Crater Lake Country partners. **Happy Holidays!**



ROGUE CREAMERY – [CLICK HERE FOR GIFT IDEAS](#)

Artisan, Oregon-Made cheese shipped coast to coast – Since 1933, Rogue Creamery has drawn from the beauty and flavors of Southern Oregon to create organic, handmade cheeses that have won international acclaim. Shop online to send award-winning cheeses and cheesy gift boxes anywhere in the USA!



BRITT MUSIC & ARTS FESTIVAL - [CLICK HERE FOR GIFT CERTIFICATE](#)

Discover your Britt Experience at the Pacific Northwest's premier outdoor summer performing arts festival. Located in historic Jacksonville, Britt presents a summer series of concerts—a signature mix of classical, blues, folk, bluegrass, pop, rock and country music.



CRATER LAKE ZIPLINE - [CLICK HERE FOR GIFT CERTIFICATE](#)

Just. Let. Go! Experience Oregon's Epic Zipline Adventure. Located 30 minutes south of Crater Lake National Park perched in the National Forest, you'll discover nine mega long ziplines, rappels, challenging skybridges and breathtaking views of mountains, forest and Upper Klamath Lake.



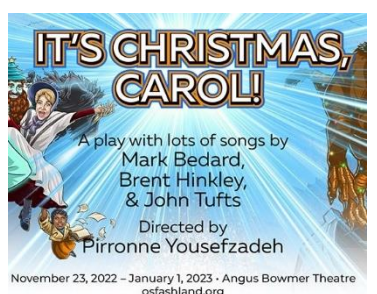
LAKE OF THE WOODS RESORT - [CLICK HERE FOR GIFT CERTIFICATE](#)

Now open year-round, this high mountain historic lake resort sits beside one of the clearest natural lakes found in Southern Oregon. Rekindle the spirit and family traditions of the Great Northwest with a getaway to this pristine area! One can enjoy cabin life, RV camping, comfort food, and outdoor fun!



NEUMAN HOTEL GROUP - [CLICK HERE FOR GIFT CERTIFICATE](#)

From a renowned downtown historic hotel to a luxury spa resort to an updated sprawling countryside hotel, the Neuman Hotel Group offers you a collection of the finest lodging in Ashland, Oregon. And nothing beats the holiday spirit or the lights of this fabulous Oregon small town.



OREGON SHAKESPEARE FESTIVAL - [CLICK HERE FOR GIFT CERTIFICATE](#)

OSF's first-ever holiday play is back - New Jokes, New Folks, Same Dinosaurs. There's plenty to discover at OSF in 2023! This Tony Award-winning festival features a combination of new plays, Shakespeare, and musicals, along with groundbreaking digital programming that reaches audiences around the world.



ROGUE VALLEY ZIPLINE – [CLICK HERE FOR GIFT CERTIFICATE](#)

Use code SAVE10 to receive \$10 off each Tour Gift Certificate now through Dec 31, 2022. See the Rogue Valley from above the trees on this five zipline course, featuring one of the most thrilling ziplines in the Pacific Northwest. Also home to the day long Zip, Dip & Sip Tour (includes zipping, lunch, rafting and wine).



WEASKU INN - [CLICK HERE FOR GIFT CERTIFICATE](#)

On the banks of the renowned Rogue River sits an Oregon legend. Built in 1924, the inn was a hideaway for Hollywood royalty – Clark Gable, Carol Lombard, and Walt Disney. Now it can be your hideaway. It offers lodge rooms, suites, and cabins fully restored with top-notch amenities including free parking, wi-fi, and afternoon snacks.



WILDLIFE SAFARI - [CLICK HERE FOR GIFT IDEAS](#)

Experience an African Savannah, the rolling hills of America, and Asian plains, all in Oregon's very own Wildlife Safari! Towering giraffes, grazing zebras, a stealthy tiger, Wildlife Safari has over 90 species from all around the world. Feed the deer in the drive thru or encounter your favorite animals up-close.



SWEET DREAMS RV RENTALS - [CLICK HER FOR A GIFT CERTIFICATE QUOTE](#)

Place an RV under your tree! Ok, we realize that not everyone can buy an RV, so why not buy a gift certificate? Pick a unit and get a quote. A 4 Day/3 Night Certificate runs \$399-\$449 (regularly \$538-\$588)). An 8 Day/7 Night Certificate is \$864-\$989 (regularly \$1,142-\$1,247). Certificates cover all costs except for refundable security deposit and delivery fee (if you chose to have it delivered). They are located in Grants Pass, Oregon.